

# 84 HARBOR DRIVE JERSEY CITY, NEW JERSEY

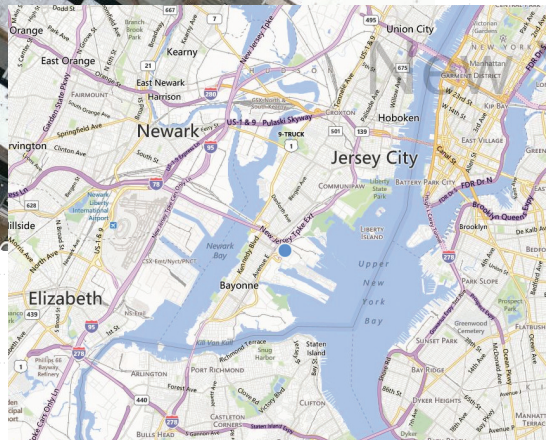
**AVAILABLE FOR SHORT or LONG-TERM NET LEASE**

**+/- 60,300 SF AVAILABLE**

- » **RAIL SERVED: 500 FEET OF SIDING**
- » **URBAN TRANSIT HUB TAX CREDITS AVAILABLE**

**FEATURES:**

- » +/- 60,300 SF Available
- » 2 Terminal Buildings
- » +/- 120,000 SF Land
- » Rail Served
- » +/- 34,950 SF Terminal 3
- » +/- 30,390 SF Terminal 2
- » 16' Clear Ceilings
- » Call for Pricing



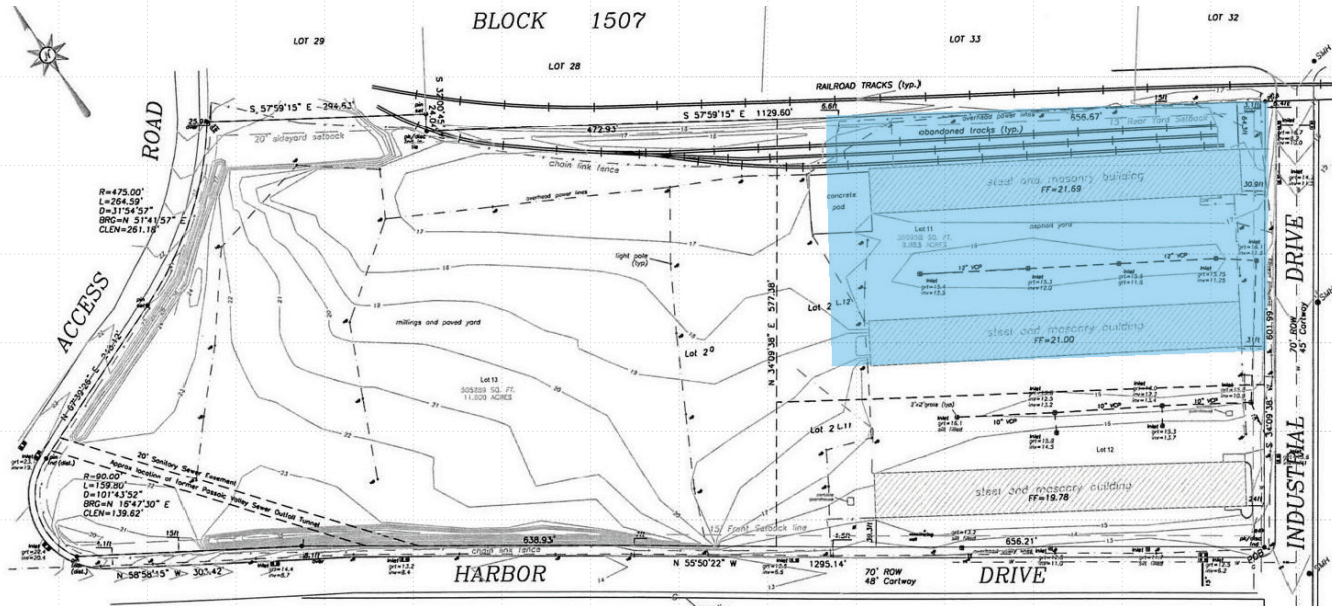
Owner/broker:

The information above has been obtained from sources believed reliable. While we do not doubt its accuracy, we have not verified it and make no guarantee, warranty or representation about it. It is your responsibility to independently confirm its accuracy and completeness. Any projections, opinions, assumptions or estimates used are for example only and do not represent the current or future performance of the property. The value of this transaction to you depends on tax and other factors which should be evaluated by your tax, financial and legal advisors. You and your advisors should conduct a careful, independent investigation of the property to determine to your satisfaction the suitability of the property for your needs.

**FOR MORE  
INFORMATION  
PLEASE  
CONTACT**

**Gary Capetta**  
Principal  
212 277 7504  
leasing@pantheonproperties.com

# 84 HARBOR DRIVE JERSEY CITY, NEW JERSEY



## FEATURES:

- » +/- 60,300 SF Available
- » 2 Terminal Buildings
- » +/- 120,000 SF Land
- » Rail Served
- » +/- 34,950 SF Terminal 3
- » +/- 30,390 SF Terminal 2
- » 16' Clear Ceilings
- » Call for Pricing

**FOR MORE  
INFORMATION  
PLEASE  
CONTACT**

**Gary Capetta**  
Principal  
212 277 7504  
leasing@pantheonproperties.com

### Owner/broker:

The information above has been obtained from sources believed reliable. While we do not doubt its accuracy, we have not verified it and make no guarantee, warranty or representation about it. It is your responsibility to independently confirm its accuracy and completeness. Any projections, opinions, assumptions or estimates used are for example only and do not represent the current or future performance of the property. The value of this transaction to you depends on tax and other factors which should be evaluated by your tax, financial and legal advisors. You and your advisors should conduct a careful, independent investigation of the property to determine to your satisfaction the suitability of the property for your needs.